



VisionPro M500

Benchtop 3D Solder Paste Inspection



High Precision 3D Solder Paste Inspection



Unsurpassed
Price-to-Performance



Best-in-Class Accuracy
and Repeatability



5 Minute GerberPro
Programming



OnBoard Real-Time
SPC Analytics



World-Class
Customer Support



Industry Leading
3-Year Warranty





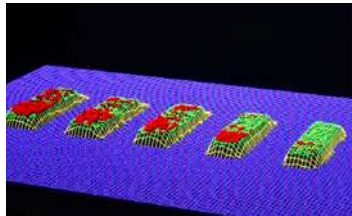
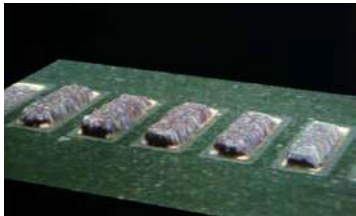
Features & Specifications

Product Overview

The VisionPro M500® employs sophisticated, 3-dimensional technology combined with an intuitive Windows® OS interface, and packaged in rugged, bench-top hardware designed for the electronics production floor. With only a few minutes of training, an operator can perform accurate 3D measurements of solder paste pads, BGA's and many other PCB features. The completely automatic measurement process eliminates operator errors and offers excellent measurement repeatability

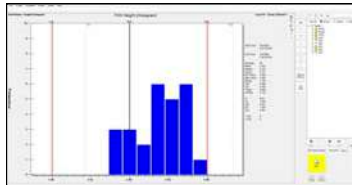
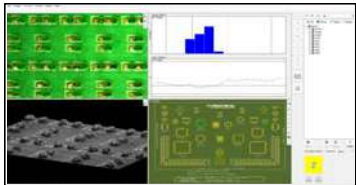
Photo-Realistic Profiling

The VisionPro M500® captures photo-realistic 3D color profiles for fast and accurate qualitative paste validation. Technicians may use these profiles to determine the root cause of the printing process-related defects and apply the appropriate corrective actions.



Advanced Statistical Analysis

The M500's ASCan Ultra® software includes on-board SPC analytics, providing a powerful tool to help technicians control key stencil printing parameters. Data is collected, calculated, and charted in real-time for critical process analysis.



Why Choose ASC

Established in 1992, ASC is the longest-standing independent SPI equipment manufacturer, providing cost-effective AOI/SPI solutions with unmatched customer service and support.

- Over 2700 successful machine installations worldwide
- Tailored solutions for maximum return on investment
- Commitment to 100% customer satisfaction
- Industry leading 3-year warranty

VisionPro M500

System Overview

Standard Work Surface	406 mm x 533 mm (16.0 x 21.0 in)
Optional Large Work Surface	914 mm x 533 mm (36.0 x 21.0 in)
Optional X-Y Manual PCB Fixture	609 mm x 508 mm (24.0 x 20.0 in)
PC Controller	Windows 10/11 Pro OS
Electrical Requirements	100-240 VAC, 50-60 Hz, 2 Amps
Ambient Operating Temperature	5° - 38° C (40° - 100° F)
Ambient Operating Humidity	<90%W non-condensing
System Weight (un-crated)	36 Kg (80 lbs)
System Weight (crated)	59 Kg (130 lbs)
Measurement Characteristics	Height, Width, Area, Volume, Registration, Bridge Detection, Realistic 3D Shape Detection
SPC Charting/Data Reports:	Fully Integrated Real-Time SPC Custom User Defined Reports

Sensor Capabilities

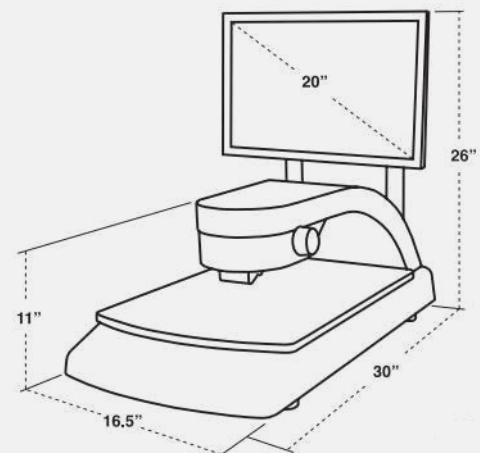
Sensor Technology	Phase Shift Interferometry (PSI)
Measurement Range	441 µm (18.0 mils)
Integral Video Camera	High Resolution CCD Camera
Field of View (FOV)	8.7 mm x 6.2mm (0.343 x 0.242 in)
Illumination	LED-based White Light

Inspection Performance

Inspection Speed	0.33 Sec/FOV
Height Accuracy	1 µm (0.04 mils)
Gauge R&R	<<10%, 6 σ
Height Resolution	0.48 µm (0.019 mils)
Lateral Resolution (X-Y)	4.3 µm (0.17 mils)
Minimum Paste Deposit	51 µm (2.0 mils)

Options

Offline Programming, NIST Calibration Standard, Custom PCB Fixtures



System Dimensions: H: 66cm (26") W: 42cm (16.5") L: 76cm (30")

