



# VisionPro AP500

*Offline 3D Solder Paste Inspection*



## Fully Automated 3D Solder Paste Inspection



Unsurpassed  
Price-to-Performance



Best-in-Class Accuracy  
and Repeatability



5 Minute GerberPro  
Programming



OnBoard Real-Time  
SPC Analytics



World-Class  
Customer Support



Industry Leading  
3-Year Warranty





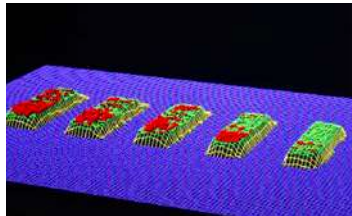
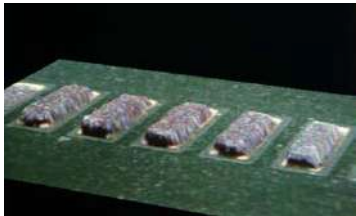
# Features & Specifications

## Product Overview

The VisionPro AP500® delivers next-generation 3D solder paste inspection built for today's electronics manufacturing needs. With enhanced positioning accuracy, fast Gerber-based programming, and a new high-level GUI, it streamlines setup and boosts production efficiency. Featuring best-in-class Gauge R&R, multiple sensor options, real-time SPC analytics, and fully automated measurements, the VisionPro AP500® offers the precision and reliability needed to improve yields and process control in high-volume PCB assembly.

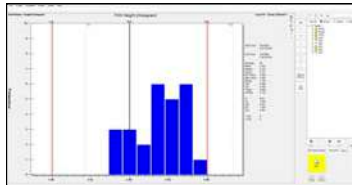
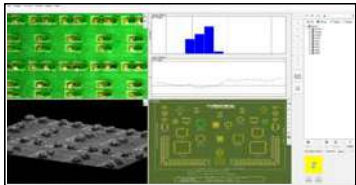
## Photo-Realistic Profiling

The VisionPro AP500® captures photo-realistic 3D color profiles for fast and accurate qualitative paste validation. Technicians may use these profiles to determine the root cause of the printing process-related defects and apply the appropriate corrective actions.



## Advanced Statistical Analysis

The AP500's ASCan Ultra® software includes on-board SPC analytics, providing a powerful tool to help technicians control key stencil printing parameters. Data is collected, calculated, and charted in real-time for critical process analysis.



## Why Choose ASC

Established in 1992, ASC is the longest-standing independent SPI equipment manufacturer, providing cost-effective AOI/SPI solutions with unmatched customer service and support.

- Over 2700 successful machine installations worldwide
- Tailored solutions for maximum return on investment
- Commitment to 100% customer satisfaction
- Industry leading 3-year warranty

## VisionPro AP500

### System Overview

Standard PCB Size	305 mm x 457 mm (12.0 x 18.0 in)
Minimum PCB Size	25 mm x 25 mm (1.0 x 1.0 in)
Maximum PCB Size	510 mm x 305mm (20.0 x 12.0 in)
PC Controller	Windows 10/11 Pro OS
Electrical Requirements	100-240 VAC, 50-60 Hz, 2 Amps
Ambient Operating Temperature	5° - 38° C (40° - 100° F)
Ambient Operating Humidity	<90%W non-condensing
System Weight (un-crated)	36 Kg (80 lbs)
System Weight (crated)	59 Kg (130 lbs)
Measurement Characteristics	Height, Width, Area, Volume, Registration, Bridge Detection, Realistic 3D Shape Detection
SPC Charting/Data Reports:	Fully Integrated Real-Time SPC Custom User Defined Reports

### Sensor Capabilities

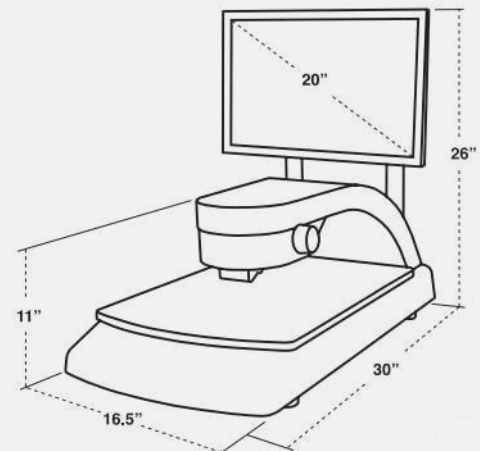
Sensor Technology	Phase Shift Interferometry (PSI)
Measurement Range	441 µm (18.0 mils)
Integral Video Camera	High Resolution CCD Camera
Field of View (FOV)	8.7 mm x 6.2mm (0.343 x 0.242 in)
Illumination	LED-based White Light

### Inspection Performance

Inspection Speed	0.33 Sec/FOV
Height Accuracy	1 µm (0.04 mils)
Gauge R&R	<<10%, 6 σ
Height Resolution	0.48 µm (0.019 mils)
Lateral Resolution (X-Y)	4.3 µm (0.17 mils)
Minimum Paste Deposit	51 µm (2.0 mils)

### Options

Offline Programming, NIST Calibration Standard, Custom PCB Fixtures



**System Dimensions:** H: 66cm (26") W: 42cm (16.5") L: 76cm (30")

